

**Product update**

**Sebastian Palmqvist**

# Chief Sales and Product Development Officer

- **20+ Years in the Industry** – Leadership roles at Com Hem, Telia, Ownit, and Telenor, driving business transformation and customer-focused growth
- **Dedicated to Customer Value** – Focused on building strong partnerships, and delivering not only technical excellence but also products that serve your needs. Customer input is essential!
- **Passionate About Digital Infrastructure** – Committed to strengthening Internet resilience to support your business and society as a whole



NETNOD

ONE PORT

# One port, many services!

- Peering at the Netnod IX
- Remote IX
- Cross-IX
- Closed User Group
- Netnod Time Direct
- **Private VLAN**

# Netnod Private VLAN

Layer 2 point-to-point connections within a data centre, metro, or between regions.

- **Quick to provision** – Get up and running fast!
- **Increased flexibility** - Extend your network reach and adapt as needed.
- **Cost-Effective** – Use your Netnod One Port for as many connections as required. Private VLAN traffic does not count as traffic over the IX.

# Netnod Remote IX

Peer remotely at any Netnod IX with just one port



# Cross-IX

Amsterdam ⇌ Stockholm

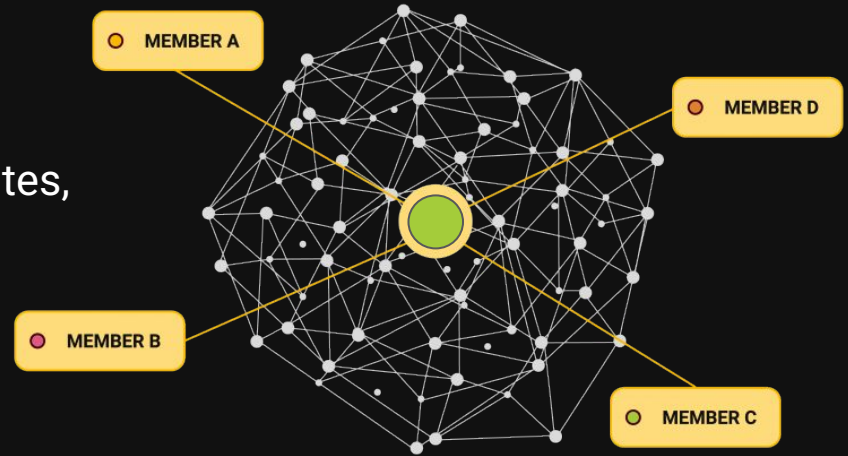
AMS IX

NETNOD IX



# Closed User Group

- **Secure:** fully secured interconnection. You know who is on the other side
- **Flexible:** customise to connect multiple sites, suppliers, partners, or customers
- **Simple:** use your Netnod One Port to connect
- Members can connect to the same Closed User Group from **multiple locations across all Netnod IXes**

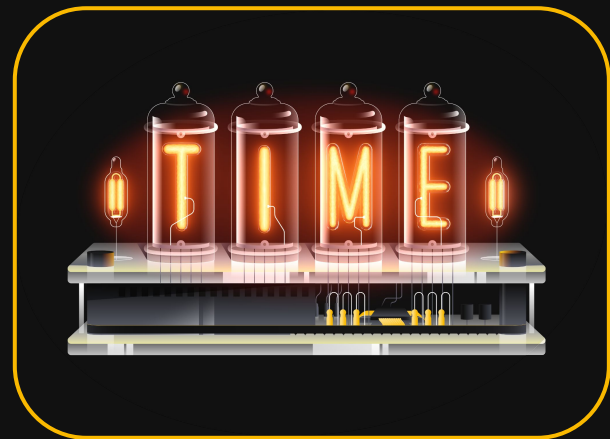




# No security without time security

Many security critical protocols need accurate time:

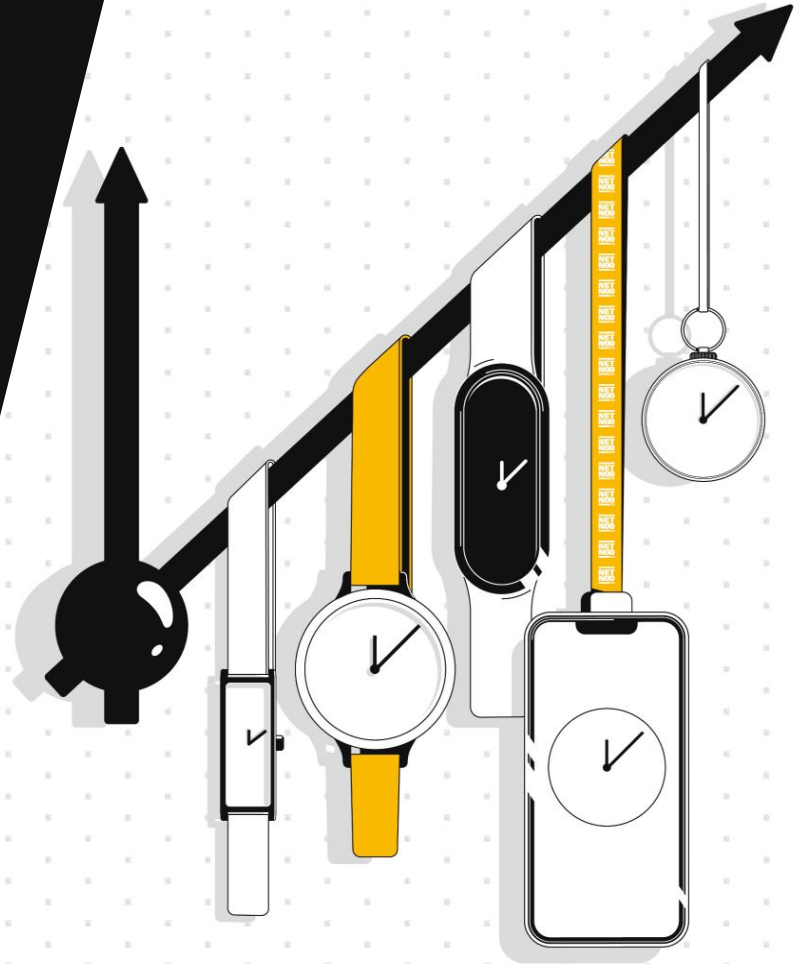
- DNSSEC, secure domain name lookups
- TLS, the basis of many other protocols
- HTTPS, everything on the web
- SMTPS, IMAPS, POP3S, secure mail



Use secure and reliable time, or **your entire network is at risk.**

# Netnod Time Direct

- A fully managed time service with SLA that guarantees 30 $\mu$ s accuracy from UTC
- Not GNSS dependent.
- Delivered over Netnod One Port so security guaranteed (vs NTP)
- Immediate provisioning and easy integration with current setup



# DWDM transport

- An optical layer point-to-point transmission service
- An industry-leading network with full redundancy and fault monitoring
- A fully managed solution with SLA
- 10G or 100G connecting regional or metro sites
- **Flexible connection options and fast provisioning**



# Customised transport solutions

- Tell us what you need and we can get a customised solution up and running fast!
- On net locations at major data centres
- Fibre access provided to other locations
- Redundant service
  - We can help ensure redundancy between multiple A+B points if needed.

**80+**

**Global DNS sites**

**There are 13  
root name DNS  
servers in the  
world.**

The world trusts Netnod to operate one.



# Customer Portal

---

Manage your Netnod services in one place

Dashboard

Services

Internet Exchange - IX

Domain Name System - DNS

Netnod Time

Billing

Contact us

Settings

FAQ

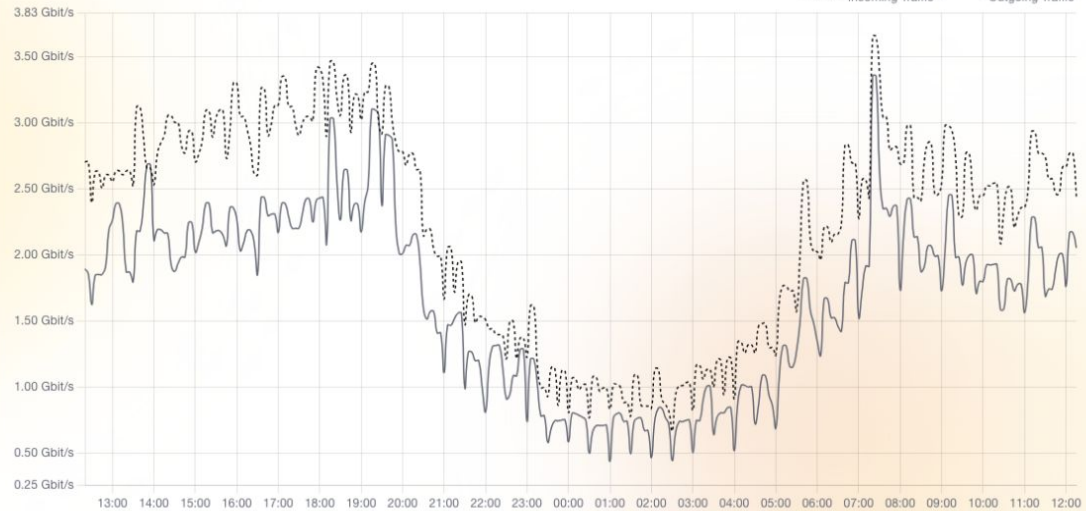
### Your IX statistics

IX DNS

Traffic All regions Last 24h

Timestamps in UTC  
[Switch timezone here](#)

Min 667.59 Mbits/s Max 3.65 Gbits/s  
 Min 437.18 Mbits/s Max 3.35 Gbits/s  
 Incoming Traffic Outgoing Traffic



Reset zoom

Click and drag to move around when zoomed



Netnod's

# Robustness for Digitalized Organisations



**Value to the community**

Meet the moderator

**Rob Allen**